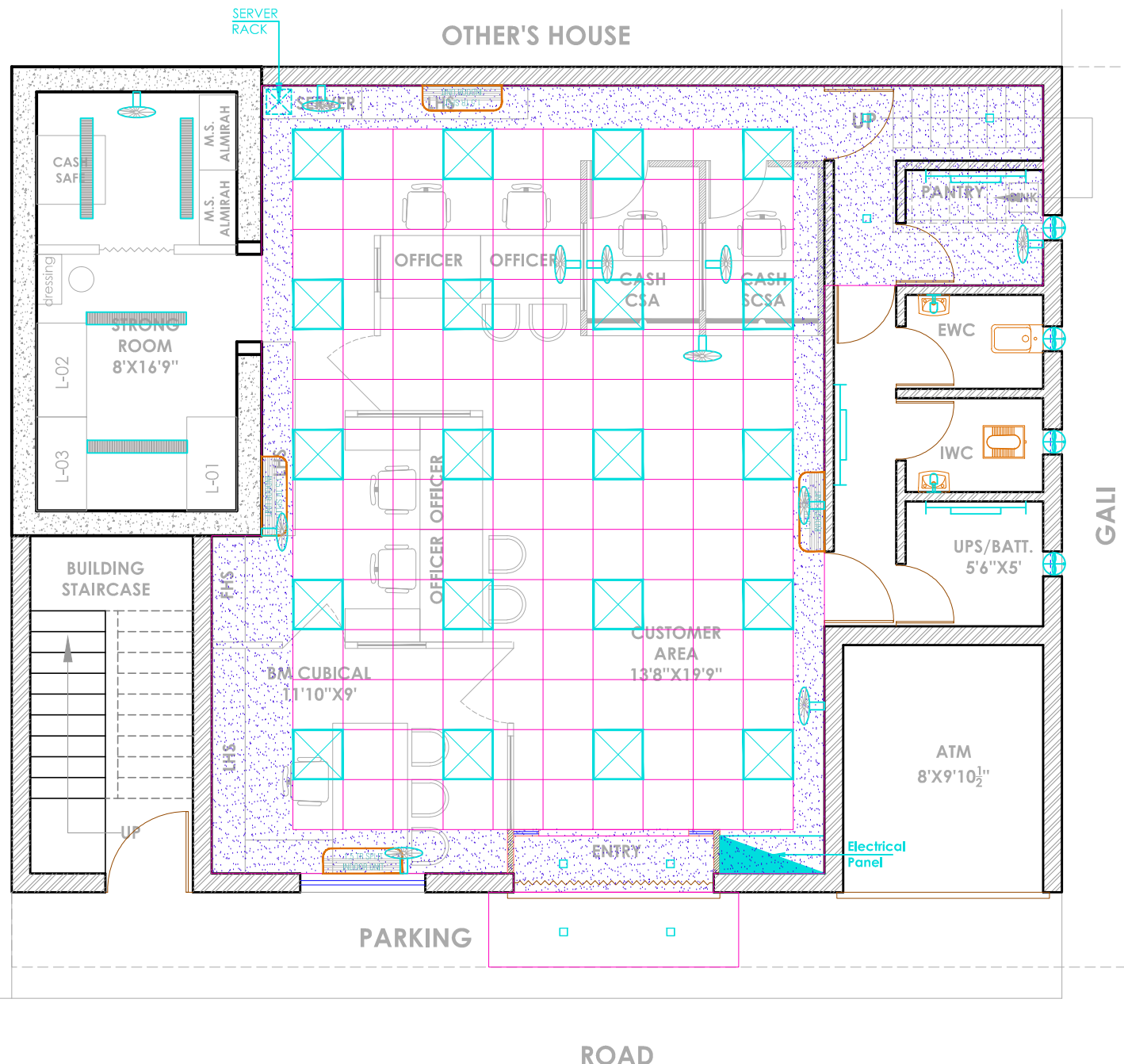


OTHER'S HOUSE

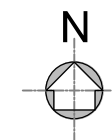
OTHER'S HOUSE



NOTES:-
 FOR ATM- 10 SQMM RAW POWER CABLE & 2 RJ45 (Data Points)
 FOR BM- 2 RJ45 (Data Points)
 1 Telephone
 3 Special (UPS) sets
 1 Raw Power 15 Amp
 FOR OTHER TABLES, SERVER & COUNTERS:-
 1 RJ45 (Data Points)
 1 Telephone
 1 Special (UPS) sets
 1 Raw Power 15 Amp
 *As far as possible raw power (switch & socket) & switch for special (UPS) set shall be on side wall/ partition i.e. above the table/ counter.
 *However Out of 3 special (UPS) sets for BM, One special set (switch & socket) to be provided above side table for Camera.

A SINGLE CUT OUT TO BE PROVIDED TO CUT OFF COMPLETE BRANCH POWER EXCEPT :-
 1) RAW POWER FOR UPS & ATM
 2) UPS POWER FOR SERVER
 3) UPS POWER FOR SECURITY GADGETS
 4) UPS POWER FOR BRANCH SIGNAGE
 5) POWER FOR SHUTTER BOXING LIGHTS

LEGEND	
	SWITCH BOARD
	2'X2' LED CEILING LIGHT
	4" SQUARE/ ROUND LED CEILING LIGHT
	1XT5 TUBE LIGHT WALL MOUNTED
	15WATT LED BULB
	1XT5 TUBE LIGHT CEILING MOUNTED
	DISTRIBUTION BOARD
	SET(1DATA, 1VOICE, 3UPS, 1Nos. 5A RAW POWER)
	15A POWER POINT
	AC POINT
	5A POINT
	15A UPS POINT
	TELEPHONE POINT
	EXHAUST
	WALL FAN
	4' DIA CEILING FAN



CEILING PLAN GROUND FLOOR FOR BO JAUNPUR